

Product Datasheet

FOXG1 antibody (orb18407)

Description

Goat polyclonal antibody to FOXG1

Species/Host

Goat

Reactivity

Bovine, Canine, Human, Mouse, Rat

Conjugation

Unconjugated

Tested

ELISA, FC, WB

Applications

ELISA, FC, WB

Target

FOXG1 / BF2

Preservatives

Supplied at 0.5 mg/ml in Tris saline, 0.02% sodium azide, pH 7.3 with 0.5% bovine serum albumin. Aliquot and store at -20°C. Minimize freezing and thawing.

Storage

Aliquot and store at -20°C. Minimize freezing and thawing.

Note

For research use only

Application notes

ELISA: Peptide ELISA: antibody detection limit dilution 1:64000. WB: Approx. 48 kDa band observed in Human Brain lysates (calculated MW of 52.4kDa according to NP_005240.3 (FOXG1B) and 50.5kDa according to CAA55038.1 (FOXG1A). Recommended concentration: 0.3-1.0 µg/ml. An additional band of unknown identity was also consistently observed at 70kDa. This band was successfully blocked by incubation with the immunising peptide. We would appreciate any feedback from people in the field - have any such results been reported with other antibodies/lysates Have any further splice variants/modified forms been reported

Protein Sequence

HQNQGSSSNPLIH

Clonality

Polyclonal

MW

52.4

Entrez

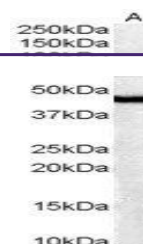
2290

Dilution Range

ELISA: 1:64000, WB: 0.3-1.0 µg/ml

Expiration Date

12 months from date of receipt.



orb18407
(0.3ug/ml)
staining of
Human Br...