

## Product Datasheet

### ORC3L antibody (orb18313)

## Description

Goat polyclonal antibody to ORC3L

## Species/Host

Goat

## Reactivity

Bovine, Canine, Human, Mouse, Rat

## Conjugation

Unconjugated

## Tested

ELISA, IHC, WB

## Applications

## Target

ORC3L

## Preservatives

Supplied at 0.5 mg/ml in Tris saline, 0.02% sodium azide, pH 7.3 with 0.5% bovine serum albumin. Aliquot and store at -20°C. Minimize freezing and thawing.

## Storage

Aliquot and store at -20°C. Minimize freezing and thawing.

## Note

For research use only

## Application notes

ELISA: Peptide ELISA: antibody detection limit dilution 1:32000. WB: Approx 75kDa band observed in lysates of cell lines HepG2 and HeLa (calculated MW of 82.3kDa according to NP\_862820.1 and NP\_036513.2). Recommended concentration: 1-3 µg/ml. An additional band of unknown identity was also consistently observed at 35kDa. This band was successfully blocked by incubation with the immunising peptide. We would appreciate any feedback from people in the field - have any such results been reported with other antibodies/lysates Have any further splice variants/modified forms been reported

## Protein Sequence

QKTDHVARLTWGGC

## Clonality

Polyclonal

## MW

82.3; 82.3; 65.9

## Entrez

**23595**

## Dilution Range

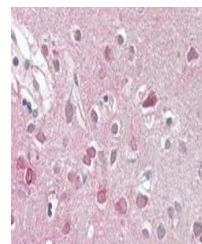
ELISA: 1:32000, WB: 1-3 µg/ml, IHC-P: 3.75 µg/ml

## Expiration Date

12 months from date of receipt.




Western blot analysis  
of HeLa lysate usi...



Immunohistochemical  
staining of Human  
Co...