

Product Datasheet

Src Antibody (orb182391)

Description

Src Antibody

Species/Host

Rabbit

Reactivity

Human

Conjugation

Unconjugated

Tested

FC, IHC, WB

Applications

Immunogen

E.coli-derived human Src recombinant protein (Position: G2-D368). Human Src shares 97% and 99% amino acid (aa) sequences identity with mouse and rat Src, respectively.

Form/Appearance

Lyophilized

Concentration

Adding 0.2 ml of distilled water will yield a concentration of 500 µg/ml.

Storage

Store at -20°C for one year from date of receipt. After reconstitution, at 4°C for one month. It can also be aliquotted and stored frozen at -20°C for six months. Avoid repeated freeze-thaw cycles.

Note

For research use only

Application notes

WB: The detection limit for Src is approximately 0.25ng/lane under reducing conditions. Tested Species: In-house tested species with positive results. By Heat: Boiling the paraffin sections in 10mM citrate buffer, pH6.0, for 20mins is required for the staining of formalin/paraffin sections. Other applications have not been tested. Optimal dilutions should be determined by end users. . Add 0.2ml of distilled water will yield a concentration of 500ug/ml.

Isotype

Rabbit IgG

Clonality

Polyclonal

MW

59835 MW

Uniprot ID

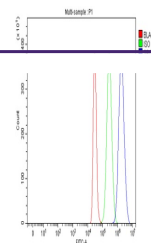
P12931

Dilution Range

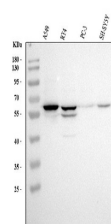
Western blot, 0.1-0.5µg/ml, Human Immunohistochemistry (Paraffin-embedded Section), 2-5µg/ml, Human, By Heat Flow Cytometry, 1-3 µg/1x10⁶ cells, Human

Expiration Date

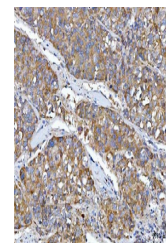
12 months from date of receipt.



Flow Cytometry analysis of HepG2 cells u...



WB analysis of Src using anti-Src antibo...



IHC analysis of Src using anti-Src antib...