

Product Datasheet

Calbindin/CALB1 Antibody (orb182377)

Description

Calbindin/CALB1 Antibody

Species/Host

Rabbit

Reactivity

Human, Mouse, Rat

Conjugation

Unconjugated

Tested Applications

FC, ICC, IHC, WB

Immunogen

E.coli-derived human Calbindin recombinant protein (Position: A2-E175). Human Calbindin shares 99% amino acid (aa) sequence identity with both mouse and rat Calbindin.

Form/Appearance

Lyophilized

Concentration

Adding 0.2 ml of distilled water will yield a concentration of 500 µg/ml.

Storage

Store at -20°C for one year from date of receipt. After reconstitution, at 4°C for one month. It can also be aliquotted and stored frozen at -20°C for six months. Avoid repeated freeze-thaw cycles.

Note

For research use only

Application notes

WB: The detection limit for Calbindin is approximately 0.25ng/lane under reducing conditions. Tested Species: In-house tested species with positive results. Predicted Species: Species predicted to be fit for the product based on sequence similarities. By Heat: Boiling the paraffin sections in 10mM citrate buffer, pH6.0, for 20mins is required for the staining of formalin/paraffin sections. Other applications have not been tested. Optimal dilutions should be determined by end users. . Add 0.2ml of distilled water will yield a concentration of 500ug/ml.

Isotype

Rabbit IgG

Clonality

Polyclonal

MW

30025 MW

Uniprot ID

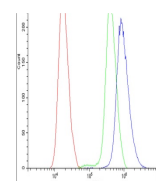
P05937

Dilution Range

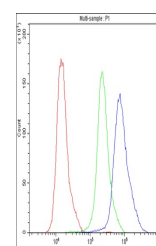
Immunohistochemistry (Paraffin-embedded Section), 0.5-1µg/ml, Human, Mouse, Rat, By HeatWestern blot, 0.1-0.5µg/ml, Rat, HumanImmunohistochemistry (Frozen Section), 0.5-1µg/ml, Human Immunocytochemistry, 0.5-1µg/ml, Human Flow Cytometry, 1-3µg/1x10⁶ cells, Human

Expiration Date

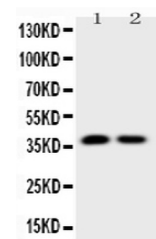
12 months from date of receipt.



Flow Cytometry analysis of SiHa cells us...



Flow Cytometry analysis of HeLa cells us...



WB analysis of Calbindin using anti-Calb...