

Product Datasheet

ACTH/POMC Antibody (orb182371)

Description

ACTH/POMC Antibody

Species/Host

Rabbit

Reactivity

Human, Mouse, Rat

Conjugation

Unconjugated

Tested

IHC

Applications

Immunogen

A synthetic peptide corresponding to a sequence in the middle region of human ACTH (138-176aa
SYSMEHFRWGKPVGKKRRPVKYPNGAEDESAEAFPLEF), different from the related mouse and rat sequences by two amino acids.

Form/Appearance

Lyophilized

Concentration

Adding 0.2 ml of distilled water will yield a concentration of 500 µg/ml.

Storage

Store at -20°C for one year from date of receipt. After reconstitution, at 4°C for one month. It can also be aliquotted and stored frozen at -20°C for six months. Avoid repeated freeze-thaw cycles.

Note

For research use only

Application notes

Tested Species: In-house tested species with positive results.
Predicted Species: Species predicted to be fit for the product based on sequence similarities. By Heat: Boiling the paraffin sections in 10mM citrate buffer, pH6.0, for 20mins is required for the staining of formalin/paraffin sections. Other applications have not been tested. Optimal dilutions should be determined by end users. . Add 0.2ml of distilled water will yield a concentration of 500ug/ml.

Isotype

Rabbit IgG

Clonality

Polyclonal

MW

29424 MW

Uniprot ID

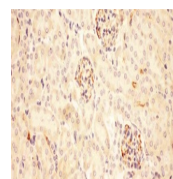
P01189

Dilution Range

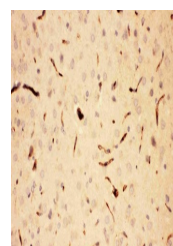
Immunohistochemistry (Paraffin-embedded Section), 0.5-1µg/ml, Mouse, Rat, Human, By Heat

Expiration Date

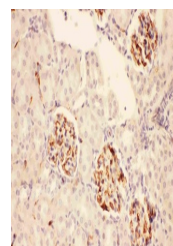
12 months from date of receipt.



IHC analysis of ACTH using anti-ACTH ant...



IHC analysis of ACTH using anti-ACTH ant...



IHC analysis of ACTH using anti-ACTH ant...