

Product Datasheet

Cofilin/CFL1 Antibody (orb182365)

Description

Cofilin/CFL1 Antibody

Species/Host

Rabbit

Reactivity

Human, Monkey, Mouse, Rat

Conjugation

Unconjugated

Tested

Applications

ELISA, FC, ICC, IF, IHC, IHC-Fr, WB

Immunogen

E.coli-derived human Cofilin recombinant protein (Position: A2-L166). Human Cofilin shares 99% amino acid (aa) sequences identity with both mouse and rat Cofilin.

Form/Appearance

Lyophilized

Concentration

Adding 0.2 ml of distilled water will yield a concentration of 500 µg/ml.

Storage

Store at -20°C for one year from date of receipt. After reconstitution, at 4°C for one month. It can also be aliquotted and stored frozen at -20°C for six months. Avoid repeated freeze-thaw cycles.

Note

For research use only

Application notes

WB: The detection limit for Cofilin is approximately 0.25ng/lane under reducing conditions. Tested Species: In-house tested species with positive results. By Heat: Boiling the paraffin sections in 10mM citrate buffer, pH6.0, for 20mins is required for the staining of formalin/paraffin sections. Other applications have not been tested. Optimal dilutions should be determined by end users. . Add 0.2ml of distilled water will yield a concentration of 500ug/ml.

Isotype

Rabbit IgG

Clonality

Polyclonal

MW

18502 MW

Uniprot ID

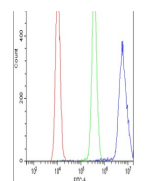
P23528

Dilution Range

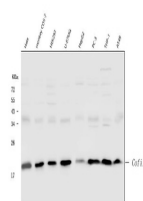
Western blot, 0.1-0.5µg/ml, Human, Mouse, Rat, Monkey Immunohistochemistry (Paraffin-embedded Section), 0.5-1µg/ml, Human, Mouse, Rat, By Heat Immunohistochemistry (Frozen Section), 0.5-1µg/ml, Human Immunocytochemistry/Immunofluorescence, 2µg/ml, Human Flow Cytometry, 1-3µg/1x10⁶ cells, Human ELISA , 0.1-0.5µg/ml, Human, -

Expiration Date

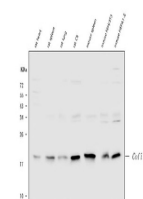
12 months from date of receipt.



Flow Cytometry analysis of U2OS cells us...



WB analysis of Cofilin using anti-Cofili...



WB analysis of Cofilin using anti-Cofili...