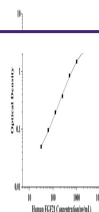


Product Datasheet

Human FGF21(Fibroblast Growth Factor 21) ELISA Kit (orb1807536)

Description

Human FGF21(Fibroblast Growth Factor 21)



Reactivity

Human

Range

31.25-2000 pg/mL

Target

FGF21

Note

For research use only

Application notes

This ELISA kit uses the Sandwich-ELISA principle. The micro ELISA plate provided in this kit has been pre-coated with an antibody specific to Human FGF21. Standards or samples are added to the micro ELISA plate wells and combined with the specific antibody. Then a biotinylated detection antibody specific for Human FGF21 and Avidin-Horseradish Peroxidase (HRP) conjugate are added successively to each micro plate well and incubated. Free components are washed away. The substrate solution is added to each well. Only those wells that contain Human FGF21, biotinylated detection antibody and Avidin-HRP conjugate will appear blue in color. The enzyme-substrate reaction is terminated by the addition of stop solution and the color turns yellow. The optical density (OD) is measured spectrophotometrically at a wavelength of 450 nm \pm 2 nm. The OD value is proportional to the concentration of Human FGF21. You can calculate the concentration of Human FGF21 in the samples by comparing the OD of the samples to the standard curve.

Sample Types

Cell culture supernatant, serum

Sensitivity

13.7 pg/mL

Expiration Date

Please enquire.