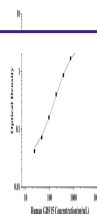


## Product Datasheet

### Human GDF15(Growth Differentiation Factor 15) ELISA Kit (orb1807508)

## Description

Human GDF15(Growth Differentiation



### Reactivity

Human

### Range

23.44-1500 pg/mL

### Target

GDF15

### Note

For research use only

### Application notes

This ELISA kit uses the Sandwich-ELISA principle. The micro ELISA plate provided in this kit has been pre-coated with an antibody specific to Human GDF15. Standards or samples are added to the micro ELISA plate wells and combined with the specific antibody. Then a biotinylated detection antibody specific for Human GDF15 and Avidin-Horseradish Peroxidase (HRP) conjugate are added successively to each micro plate well and incubated. Free components are washed away. The substrate solution is added to each well. Only those wells that contain Human GDF15, biotinylated detection antibody and Avidin-HRP conjugate will appear blue in color. The enzyme-substrate reaction is terminated by the addition of stop solution and the color turns yellow. The optical density (OD) is measured spectrophotometrically at a wavelength of 450 nm  $\pm$  2 nm. The OD value is proportional to the concentration of Human GDF15. You can calculate the concentration of Human GDF15 in the samples by comparing the OD of the samples to the standard curve.

### Sample Types

Tissue homogenate, serum

### Sensitivity

6.5 pg/mL

### Expiration Date

Please enquire.