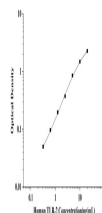


Product Datasheet

Human TLR-2(Toll-like Receptor 2) ELISA Kit (orb1807173)

Description	Human TLR-2(Toll-like Receptor 2) ELISA Kit
Reactivity	Human
Range	0.31-20 ng/mL
Target	TLR2
Note	For research use only



Application notes	<p>This ELISA kit uses the Sandwich-ELISA principle. The micro ELISA plate provided in this kit has been pre-coated with an antibody specific to Human TLR-2. Standards or samples are added to the micro ELISA plate wells and combined with the specific antibody. Then a biotinylated detection antibody specific for Human TLR-2 and Avidin-Horseradish Peroxidase (HRP) conjugate are added successively to each micro plate well and incubated. Free components are washed away. The substrate solution is added to each well. Only those wells that contain Human TLR-2, biotinylated detection antibody and Avidin-HRP conjugate will appear blue in color. The enzyme-substrate reaction is terminated by the addition of stop solution and the color turns yellow. The optical density (OD) is measured spectrophotometrically at a wavelength of 450 nm \pm 2 nm. The OD value is proportional to the concentration of Human TLR-2. You can calculate the concentration of Human TLR-2 in the samples by comparing the OD of the samples to the standard curve.</p>
--------------------------	---

Sample Types	Tissue homogenate, Cell lysate
Sensitivity	0.16 ng/mL
Expiration Date	Please enquire.