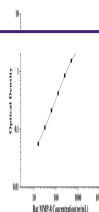


## Product Datasheet

### Rat MMP-8(Matrix Metalloproteinase 8) ELISA Kit (orb1806935)

## Description

Rat MMP-8(Matrix Metalloproteinase 8)



### Reactivity

Rat

### Range

15.63-1000pg/mL

### Target

MMP-8

### Note

For research use only

### Application notes

This ELISA kit uses the Sandwich-ELISA principle. The micro ELISA plate provided in this kit has been pre-coated with an antibody specific to Rat MMP-8. Standards or samples are added to the micro ELISA plate wells and combined with the specific antibody. Then a biotinylated detection antibody specific for Rat MMP-8 and Avidin-Horseradish Peroxidase (HRP) conjugate are added successively to each micro plate well and incubated. Free components are washed away. The substrate solution is added to each well. Only those wells that contain Rat MMP-8, biotinylated detection antibody and Avidin-HRP conjugate will appear blue in color. The enzyme-substrate reaction is terminated by the addition of stop solution and the color turns yellow. The optical density (OD) is measured spectrophotometrically at a wavelength of 450 nm  $\pm$  2 nm. The OD value is proportional to the concentration of Rat MMP-8. You can calculate the concentration of Rat MMP-8 in the samples by comparing the OD of the samples to the standard curve.

### Sample Types

serum, plasma, Tissue homogenate and Other biological samples

### Sensitivity

9.38 pg/mL

### Expiration Date

Please enquire.