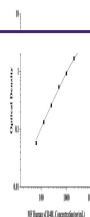


Product Datasheet

MF-Human sCD40L(Soluble Cluster of Differentiation 40 Ligand) ELISA Kit (orb1806755)

Description

MF-Human sCD40L(Soluble Cluster of


Reactivity

Human

Range

62.5-4000pg/mL

Target

sCD40L

Note

For research use only

Application notes

This ELISA kit uses the Sandwich-ELISA principle. The micro ELISA plate provided in this kit has been pre-coated with an antibody specific to Human sCD40L. Samples (or Standards) are added to the micro ELISA plate wells and combined with the specific antibody and biotinylated detection antibody specific for Human sCD40L. Then Avidin-Horseradish Peroxidase (HRP) conjugate are added successively to each micro plate well and incubated. Free components are washed away. The substrate solution is added to each well. Only those wells that contain Human sCD40L, biotinylated detection antibody and Avidin-HRP conjugate will appear blue in color. The enzyme-substrate reaction is terminated by the addition of stop solution and the color turns yellow. The optical density (OD) is measured spectrophotometrically at a wavelength of 450 nm. The OD value is proportional to the concentration of Human sCD40L. You can calculate the concentration of Human sCD40L in the samples by comparing the OD of the samples to the standard curve.

Sample Types

Serum, Plasma and Tissue homogenate and other biological samples□Sample volume□25μL

Sensitivity

37.5 pg/mL

Expiration Date

Please enquire.