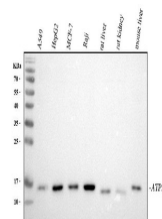


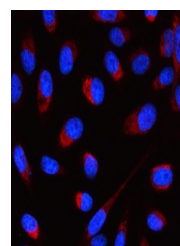
Product Datasheet

Anti-ATP5F1D Antibody (orb1804710)

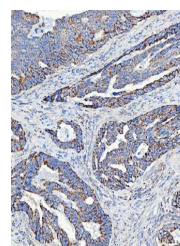
Description	Anti-ATP5F1D Antibody
Species/Host	Rabbit
Reactivity	Human, Mouse, Rat
Conjugation	Unconjugated
Tested Applications	ELISA, ICC, IF, IHC, WB
Immunogen	E.coli-derived human ATP5F1D recombinant protein (Position: R8-E168).
Form/Appearance	Lyophilized
Concentration	Adding 0.2 ml of distilled water will yield a concentration of 500 µg/ml.
Storage	At -20°C for one year from date of receipt. After reconstitution, at 4°C for one month. It can also be aliquotted and stored frozen at -20°C for six months. Avoid repeated freezing and thawing.
Note	For research use only
Application notes	Tested Species: In-house tested species with positive results. Other applications have not been tested. Optimal dilutions should be determined by end users. Adding 0.2 ml of distilled water will yield a concentration of 500 µg/ml
Clonality	Polyclonal
MW	17 kDa
Uniprot ID	P30049
Dilution Range	Western blot, 0.25-0.5 µg/ml, Human, Mouse, Rat Immunohistochemistry, 1-2 µg/ml, Human, Mouse, Rat Immunocytochemistry/Immunofluorescence, 5 µg/ml, Human ELISA, 0.1-0.5 µg/ml, Human
Expiration Date	12 months from date of receipt.



WB analysis of ATP5D/ATP5F1D using anti-...



IF analysis of ATP5D/ATP5F1D using anti-...



IHC analysis of ATP5D/ATP5F1D using anti-...