

Product Datasheet

C-C chemokine receptor type 5 CCR5 Antibody (orb18015)

Description

C-C chemokine receptor type 5 CCR5



Species/Host

Rabbit

Reactivity

Human, Mouse, Rat

Conjugation

Unconjugated

Tested

WB

Applications

IHC-P of human rectal carcinoma tissue (...)

Immunogen

A synthetic peptide corresponding to a sequence at the N-terminus of human CCR5 (19-34aa PCQKINVKQIAARLLP), different from the related rat sequence by two amino acids.

Form/Appearance

Lyophilized

Concentration

Adding 0.2 ml of distilled water will yield a concentration of 500 µg/ml.

Storage

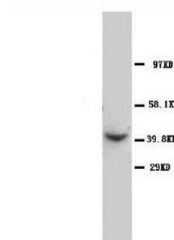
Store at -20°C for one year from date of receipt. After reconstitution, at 4°C for one month. It can also be aliquotted and stored frozen at -20°C for six months. Avoid repeated freeze-thaw cycles.

Note

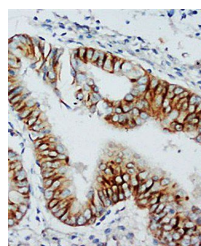
For research use only

Application notes

Tested Species: In-house tested species with positive results. Predicted Species: Species predicted to be fit for the product based on sequence similarities. Other applications have not been tested. Optimal dilutions should be determined by end users. . Add 0.2ml of distilled water will yield a concentration of 500ug/ml.



Western Blot analysis of rat liver tissu...



Immunohistochemical analysis of paraffin...

Isotype

Rabbit IgG

Clonality

Polyclonal

MW

40524 MW

Uniprot ID

P51681

Dilution Range

Western blot, 0.1-0.5µg/ml, Human, Mouse, Rat

Expiration Date

12 months from date of receipt.