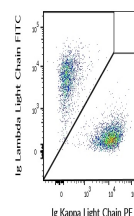


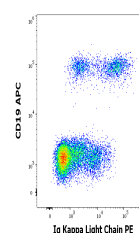
Product Datasheet

Ig Kappa Light Chain Antibody (PE) (orb179919)

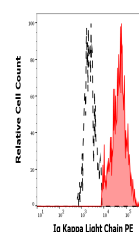
Description	Anti-Hu Ig Kappa Light Chain PE
Reactivity	Human
Conjugation	PE
Tested Applications	FC
Immunogen	Human IgG-kappa myeloma protein
Target	Ig Kappa Light Chain
Preservatives	Stabilizing phosphate buffered saline (PBS), pH 7.4, 15 mM sodium azide
Storage	Store at 2-8°C. Protect from prolonged exposure to light. Do not freeze.
Note	For research use only
Application notes	Flow cytometry: The reagent is designed for analysis of human blood cells using 10 µl reagent / 100 µl of whole blood or 10 ⁶ cells in a suspension. The content of a vial (1 ml) is sufficient for 100 tests. Extracellular and intracellular staining.
Isotype	Mouse IgG1 kappa
Clonality	Monoclonal
Purity	Purified antibody is conjugated with R-phycoerythrin (PE) under optimum conditions. Unconjugated antibody and free fluorochrome are removed by size-exclusion chromatography.
Dilution Range	Flow cytometry: The reagent is designed for analysis of human blood cells using 10 µl reagent / 100 µl of whole blood or 10 ⁶ cells in a suspension. The content of a vial (1 ml) is sufficient for 100 tests. Extracellular and intracellular staining.
Expiration Date	12 months from date of receipt.



Flow
cytometry
multicolor
surface
staini...



Flow
cytometry
multicolor
surface
staini...



Separation
of human Ig
Lambda
Kappa
Chai...