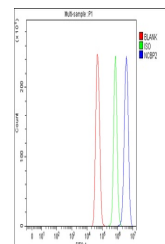


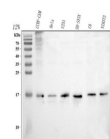
Product Datasheet

Anti-CBP20/NCBP2 Antibody (orb1786067)

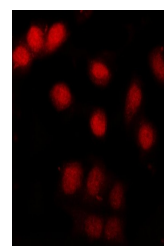
Description	Anti-CBP20/NCBP2 Antibody
Species/Host	Rabbit
Reactivity	Human, Mouse, Rat
Conjugation	Unconjugated
Tested Applications	ELISA, FC, ICC, IF, IHC, WB
Immunogen	E.coli-derived human CBP20/NCBP2 recombinant protein (Position: S2-N102).
Form/Appearance	Lyophilized
Concentration	Adding 0.2 ml of distilled water will yield a concentration of 500 µg/ml.
Storage	At -20°C for one year from date of receipt. After reconstitution, at 4°C for one month. It can also be aliquotted and stored frozen at -20°C for six months. Avoid repeated freezing and thawing.
Note	For research use only
Application notes	Tested Species: In-house tested species with positive results. Other applications have not been tested. Optimal dilutions should be determined by end users. Adding 0.2 ml of distilled water will yield a concentration of 500 µg/ml
Clonality	Polyclonal
MW	18 kDa
Uniprot ID	P52298
Dilution Range	Western blot, 0.1-0.25 µg/ml, Human, Mouse, Rat Immunohistochemistry, 2-5 µg/ml, Human Immunocytochemistry/Immunofluorescence, 5 µg/ml, Human Flow Cytometry (Fixed), 1-3 µg/1x10 ⁶ cells, Human ELISA, 0.1-0.5 µg/ml, Human
Expiration Date	12 months from date of receipt.



Flow Cytometry analysis of U251 cells using anti-CBP20/NCBP2 antibody.



WB analysis of CBP20/NCBP2 using anti-CBP20/NCBP2 antibody.



IF analysis of CBP20/NCBP2 using anti-CBP20/NCBP2 antibody.