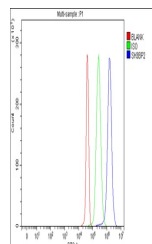


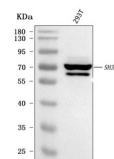
Product Datasheet

Anti-3BP2/SH3BP2 Antibody (orb1743927)

Description	Anti-3BP2/SH3BP2 Antibody
Species/Host	Rabbit
Reactivity	Human
Conjugation	Unconjugated
Tested Applications	ELISA, FC, WB
Immunogen	E.coli-derived human 3BP2/SH3BP2 recombinant protein (Position: R256-R561).
Form/Appearance	Lyophilized
Concentration	Adding 0.2 ml of distilled water will yield a concentration of 500 µg/ml.
Storage	At -20°C for one year from date of receipt. After reconstitution, at 4°C for one month. It can also be aliquotted and stored frozen at -20°C for six months. Avoid repeated freezing and thawing.
Note	For research use only
Application notes	Tested Species: In-house tested species with positive results. Other applications have not been tested. Optimal dilutions should be determined by end users. Adding 0.2 ml of distilled water will yield a concentration of 500 µg/ml
Clonality	Polyclonal
MW	70 kDa
Uniprot ID	P78314
Dilution Range	Western blot, 0.25-0.5 µg/ml, Human Flow Cytometry (Fixed), 1-3 µg /1x10 ⁶ cells, Human Direct ELISA, 0.1-0.5 µg/ml, Human
Expiration Date	12 months from date of receipt.



Flow Cytometry analysis of JK cells using...



WB analysis of 3BP2/SH3BP2 using anti-3B...