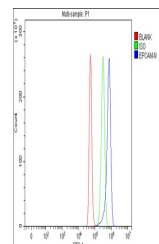


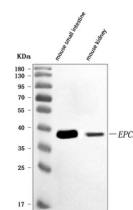
Product Datasheet

CD326/Epcam Antibody (orb1728194)

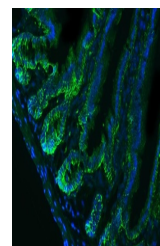
Description	CD326/Epcam Antibody
Species/Host	Rabbit
Reactivity	Mouse, Rat
Conjugation	Unconjugated
Tested Applications	ELISA, FC, IF, IHC, WB
Immunogen	E.coli-derived mouse CD326/Epcam recombinant protein (Position: Q24-A267).
Form/Appearance	Lyophilized
Concentration	Adding 0.2 ml of distilled water will yield a concentration of 500 µg/ml.
Storage	At -20°C for one year from date of receipt. After reconstitution, at 4°C for one month. It can also be aliquotted and stored frozen at -20°C for six months. Avoid repeated freezing and thawing.
Note	For research use only
Application notes	Tested Species: In-house tested species with positive results. Other applications have not been tested. Optimal dilutions should be determined by end users. Adding 0.2 ml of distilled water will yield a concentration of 500 µg/ml
Clonality	Polyclonal
MW	38 kDa
Uniprot ID	Q99JW5
Dilution Range	Western blot, 0.1-0.25 µg/ml, Mouse Immunohistochemistry(Paraffin-embedded Section), 1-2 µg/ml, Mouse, Rat Immunofluorescence, 5 µg/ml, Mouse, Rat Flow Cytometry, 1-3 µg /1x10 ⁶ cells, Mouse Direct ELISA, 0.1-0.5 µg/ml, Mouse
Expiration Date	12 months from date of receipt.



Flow Cytometry analysis of RAW264.7 cell...



WB analysis of CD326/Epcam using anti-CD...



IF analysis of CD326/Epcam using anti-CD...