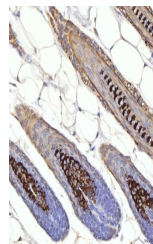


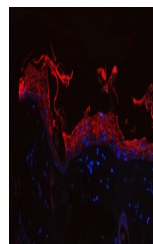
Product Datasheet

Cytokeratin 1/Krt1 Antibody (orb1676498)

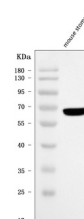
Description	Cytokeratin 1/Krt1 Antibody
Species/Host	Rabbit
Reactivity	Mouse
Conjugation	Unconjugated
Tested Applications	ELISA, IF, IHC, WB
Immunogen	E.coli-derived mouse Cytokeratin 1/Krt1 recombinant protein (Position: L223-Q439).
Form/Appearance	Lyophilized
Concentration	Adding 0.2 ml of distilled water will yield a concentration of 500 µg/ml.
Storage	At -20°C for one year from date of receipt. After reconstitution, at 4°C for one month. It can also be aliquotted and stored frozen at -20°C for six months. Avoid repeated freezing and thawing.
Note	For research use only
Application notes	Tested Species: In-house tested species with positive results. Other applications have not been tested. Optimal dilutions should be determined by end users. Adding 0.2 ml of distilled water will yield a concentration of 500 µg/ml.
Clonality	Polyclonal
MW	66 kDa
Uniprot ID	P04104
Dilution Range	Western blot, 0.25-0.5 µg/ml, Mouse Immunohistochemistry(Paraffin-embedded Section), 2-5 µg/ml, Mouse Immunofluorescence, 5 µg/ml, Mouse Direct ELISA, 0.1-0.5 µg/ml, Mouse
Expiration Date	12 months from date of receipt.



IHC analysis of Cytokeratin 1/Krt1 using...



IF analysis of Cytokeratin 1/Krt1 using ...



Western blot analysis of Cytokeratin 1/K...