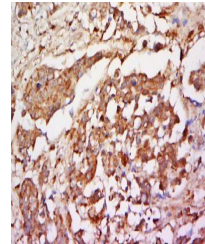


Product Datasheet

Girdin (Phospho-Tyr1765) antibody (orb157143)

Description	Girdin (Phospho-Tyr1765) antibody
Species/Host	Rabbit
Reactivity	Human
Conjugation	Unconjugated
Tested Applications	ELISA, ICC, IF, IHC-Fr, IHC-P
Immunogen	KLH conjugated synthesised phosphopeptide derived from human Girdin around the phosphorylation site of Ser1765 (DT(p-Y)FI)
Target	phospho-Girdin (Tyr1765)
Preservatives	0.01M TBS(pH7.4) with 1% rAlbumin, 0.03% Proclin300 and 50% Glycerol.
Form/Appearance	Liquid
Concentration	1mg/ml
Storage	Shipped at 4°C. Store at -20 °C for one year. Avoid repeated freeze/thaw cycles.
Note	For research use only
Isotype	IgG
Clonality	Polyclonal
MW	206 kDa
Uniprot ID	Q3V6T2
Expiration Date	12 months from date of receipt.



Immunohistochemical staining of human CO...