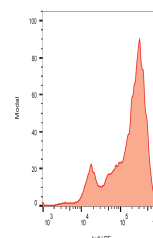


Product Datasheet

BrdU antibody (PE) (orb154518)

Description	Mouse monoclonal antibody to BrdU (PE)
Conjugation	PE
Tested Applications	FC
Immunogen	Bromodeoxyuridine conjugated to BSA
Target	BrdU
Preservatives	Stabilizing phosphate buffered saline (PBS), pH 7.4, 15 mM sodium azide
Storage	Store at 2-8°C. Protect from prolonged exposure to light. Do not freeze.
Note	For research use only
Application notes	Flow cytometry: The reagent is designed for analysis of human blood cells using 10 µl reagent / 100 µl of whole blood or 106 cells in a suspension. The content of a vial (1 ml) is sufficient for 100 tests. Intracellular staining.
Isotype	Mouse IgG1
Clonality	Monoclonal
Purity	Purified antibody is conjugated with R-phycoerythrin (PE) under optimum conditions. Unconjugated antibody and free fluorochrome are removed by size-exclusion chromatography.
Dilution Range	Flow cytometry: The reagent is designed for analysis of human blood cells using 10 µl reagent / 100 µl of whole blood or 106 cells in a suspension. The content of a vial (1 ml) is sufficient for 100 tests. Intracellular staining.
Expiration Date	12 months from date of receipt.



Flow
cytometry
analysis
(intracellular
S...