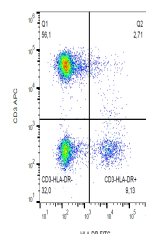


Product Datasheet

HLA-DR antibody (FITC) (orb154490)

Description	Mouse monoclonal antibody conjugated to FITC which recognizes HLA-DR that belongs to the MHC class I...
Reactivity	Canine, Human, Primate
Conjugation	FITC
Tested Applications	FC
Immunogen	Human B lymphocytes
Target	HLA-DR
Preservatives	Stabilizing phosphate buffered saline (PBS), pH 7.4, 15 mM sodium azide
Storage	Store at 2-8°C. Protect from prolonged exposure to light. Do not freeze.
Note	For research use only
Application notes	Flow cytometry: The reagent is designed for analysis of human blood cells using 4 µl reagent / 100 µl of whole blood or 106 cells in a suspension. The content of a vial (0.4 ml) is sufficient for 100 tests.
Isotype	Mouse IgG2a kappa
Clonality	Monoclonal
Purity	Purified antibody is conjugated with fluorescein isothiocyanate (FITC) under optimum conditions and unconjugated antibody and free fluorochrome are removed by size-exclusion chromatography.
Dilution Range	Flow cytometry: The reagent is designed for analysis of human blood cells using 4 µl reagent / 100 µl of whole blood or 106 cells in a suspension. The content of a vial (0.4 ml) is sufficient for 100 tests.
Expiration Date	12 months from date of receipt.



Flow
cytometry
analysis
(surface
stainin...