

## Product Datasheet

### Podocin NPHS2 Antibody (orb146713)

## Description

Podocin NPHS2 Antibody

### Species/Host

Rabbit

### Reactivity

Human, Mouse, Rat

### Conjugation

Unconjugated

### Tested

IHC, WB

### Applications

### Immunogen

A synthetic peptide corresponding to a sequence at the C-terminus of human NPHS2 (368-383aa KPVEPLNPKKKDSPML), identical to the related mouse sequence, and different from the related rat sequence by one amino acid.

### Form/Appearance

Lyophilized

### Concentration

Adding 0.2 ml of distilled water will yield a concentration of 500 µg/ml.

### Storage

Store at -20°C for one year from date of receipt. After reconstitution, at 4°C for one month. It can also be aliquotted and stored frozen at -20°C for six months. Avoid repeated freeze-thaw cycles.

### Note

For research use only

### Application notes

Tested Species: In-house tested species with positive results. Predicted Species: Species predicted to be fit for the product based on sequence similarities. By Heat: Boiling the paraffin sections in 10mM citrate buffer, pH6.0, for 20mins is required for the staining of formalin/paraffin sections. Other applications have not been tested. Optimal dilutions should be determined by end users. . Add 0.2ml of distilled water will yield a concentration of 500ug/ml.

### Isotype

Rabbit IgG

### Clonality

Polyclonal

### MW

42201 MW

### Uniprot ID

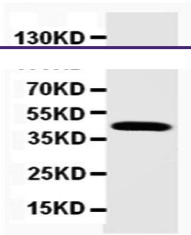
**Q9NP85**

### Dilution Range

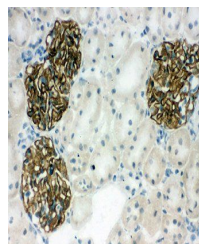
Immunohistochemistry (Frozen Section), 0.5-1µg/ml, Rat, Human, Mouse  
Immunohistochemistry (Paraffin-embedded Section), 0.5-1µg/ml, Rat, Human, Mouse,  
By HeatWestern blot, 0.1-0.5µg/ml, Rat, Human, Mouse

### Expiration Date

12 months from date of receipt.



Western blot analysis of Rat Kidney Tissue...



Immunohistochemical analysis of formalin...