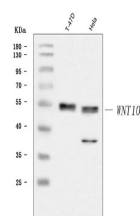


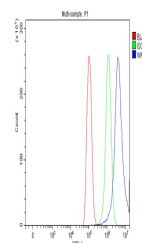
Product Datasheet

WNT10B Antibody (orb1291693)

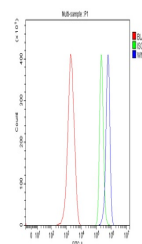
| | |
|----------------------------|--|
| Description | WNT10B Antibody |
| Species/Host | Rabbit |
| Reactivity | Human, Mouse, Rat |
| Conjugation | Unconjugated |
| Tested Applications | FC, WB |
| Immunogen | A synthetic peptide corresponding to a sequence of human WNT10B (RLPHHSAILKRGFRE). |
| Form/Appearance | Lyophilized |
| Concentration | Adding 0.2 ml of distilled water will yield a concentration of 500 µg/ml. |
| Storage | At -20°C for one year from date of receipt. After reconstitution, at 4°C for one month. It can also be aliquotted and stored frozen at -20°C for six months. Avoid repeated freezing and thawing. |
| Note | For research use only |
| Application notes | Tested Species: In-house tested species with positive results. Other applications have not been tested. Optimal dilutions should be determined by end users. Adding 0.2 ml of distilled water will yield a concentration of 500 µg/ml. |
| Isotype | Rabbit IgG |
| Clonality | Polyclonal |
| MW | 50 kDa |
| Uniprot ID | O00744 |
| Dilution Range | Western blot, 0.25-0.5 µg/ml, Human Flow Cytometry, 1-3 µg/1x10 ⁶ cells, Human, Mouse, Rat |
| Expiration Date | 12 months from date of receipt. |



Western blot analysis of WNT10B using an...



Flow Cytometry analysis of PC-3 cells us...



Flow Cytometry analysis of ANA-1 cells u...