

---

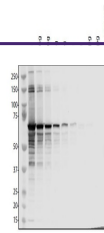
## Product Datasheet

### SARS-CoV-2 (COVID-19) Spike Antibody (orb1274133)

**Description**

SARS-CoV-2 (COVID-19) Spike Antibody

<b>Species/Host</b>	Sheep
<b>Reactivity</b>	Virus
<b>Conjugation</b>	Unconjugated
<b>Tested Applications</b>	WB
<b>Immunogen</b>	MBP-SARS-CoV2 S Protein
<b>Target</b>	S
<b>Preservatives</b>	Antibody supplied in PBS.
<b>Form/Appearance</b>	Liquid
<b>Concentration</b>	batch dependent
<b>Storage</b>	Aliquot and store at -20°C. As with all antibodies care should be taken to avoid repeated freeze thaw cycles. Antibodies should not be exposed to prolonged high temperatures.
<b>Note</b>	For research use only
<b>Application notes</b>	Detection Antibodies: 1 µg/ml Ab, 5% BSA in TBS-T, 4°C overnight Blocking: 5% milk in TBS-T, 1h room temp Secondary Antibodies: 1:15,000 donkey anti-sheep, 1:15,000 donkey anti-mouse, in TBS-T, 1h room temp Wash: TBS-T, 4x 10 min
<b>Clonality</b>	Polyclonal
<b>Uniprot ID</b>	<b>PODTC2</b>
<b>Dilution Range</b>	Detection Antibodies: 1 µg/ml Ab, 5% BSA in TBS-T, 4°C overnight Blocking: 5% milk in TBS-T, 1h room temp Secondary Antibodies: 1:15,000 donkey anti-sheep, 1:15,000 donkey anti-mouse, in TBS-T, 1h room temp Wash: TBS-T, 4x 10 min
<b>Expiration Date</b>	12 months from date of receipt.



Antibody used at 1 µg/mL in WB.