

Product Datasheet

Map2k5 Antibody (orb1273559)

Description

Map2k5 Antibody

Species/Host

Rabbit

Reactivity

Bovine, Canine, Frog, Gallus, Human, Mouse, Rat, Zebrafish

Conjugation

Unconjugated

Tested

WB

Applications

Immunogen

Phosphopeptide corresponding to amino acid residues surrounding the phospho-Ser311, Thr315 of MEK5.

Target

Map2k5

Form/Appearance

Liquid

Concentration

batch dependent

Storage

MEK5 antibody can be stored at -20°C and is stable at -20°C for at least 1 year.

Note

For research use only

Application notes

The antibody has been directly tested for reactivity in Western blots with rat tissue. It is anticipated that the antibody will react with mouse, human, chicken, bovine, canine, non-human primate, Xenopus, and Zebrafish tissues based on the fact that these species have 100% homology with the amino acid sequence used as antigen.

Clonality

Polyclonal

MW

49

Uniprot ID

[Q62862](#)

NCBI

[Q62862](#)

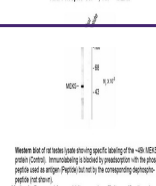
Dilution Range

The antibody has been directly tested for reactivity in Western blots with rat tissue. It is anticipated that the antibody will react with mouse, human, chicken, bovine, canine, non-human primate, Xenopus, and Zebrafish tissues based on the fact that these species have 100% homology with the amino acid sequence used as antigen.

Expiration Date

12 months from date of receipt.

Anti-Phospho-Ser³¹¹, Thr³¹⁵ MEK5



Western blot of rat testes lysate showing specific labeling of the MEK5 protein (49 kDa). Immunoblotting is blocked by preabsorption with the phosphopeptide used as antigen. Peptide (not used) is the corresponding phosphopeptide (not shown).