

## Product Datasheet

### MAP2K1 Antibody (orb1273519)

## Description

## MAP2K1 Antibody

Anti-Phospho Ser<sup>218/222</sup> MEK 1/2

### Species/Host

Rabbit

### Reactivity

Frog, Human, Mouse, Rat

### Conjugation

Unconjugated

### Tested

WB

### Applications

### Immunogen

MEK 1/2 (Ser218/222) polyclonal antibody was raised against a synthetic phosphopeptide corresponding to amino acids residues surrounding the phosphoSer218/222 of human MEK 1/2.

### Target

MAP2K1

### Form/Appearance

Liquid

### Concentration

batch dependent

### Storage

For long term storage -80°C is recommended, but shorter term storage at -20°C is also acceptable as aliquots may be taken without freeze/thawing due to the presence of 50% glycerol. Stable for one year.

### Note

For research use only

### Application notes

The antibody immunolabels the ~45k MEK protein in a Western blot of serum-stimulated NIH 3T3 cells. The immunolabeling is blocked by the phosphopeptide used as antigen but not the corresponding non-phosphopeptide. Applications include Dot Blots (DB) and Western Blots (WB). Suitability for Immunohistochemistry (IHC) has not yet been determined. Human, mouse, rat and Xenopus have 100% amino acid sequence identity with the antigen used to raise the antibody. When internally tested under ideal conditions the working dilutions were 1:1000 for DB and WB.

### Clonality

Polyclonal

### MW

45

### Uniprot ID

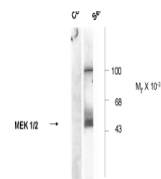
[Q02750](#)

### NCBI

[Q02750](#)

### Dilution Range

The antibody immunolabels the ~45k MEK protein in a Western blot of serum-stimulated NIH 3T3 cells. The immunolabeling is blocked by the phosphopeptide used as antigen but not the corresponding non-phosphopeptide. Applications include Dot Blots (DB) and Western Blots (WB). Suitability for Immunohistochemistry (IHC) has not yet been determined. Human, mouse, rat



Western blot of NIH 3T3 cell lysates. Th...