

## Product Datasheet

### Gabra1 Antibody (orb1273501)

## Description

## Gabra1 Antibody

Anti- $\alpha 1$  subunit of the GABA<sub>A</sub>-R

### Species/Host

Rabbit

### Reactivity

Bovine, Human, Rat

### Conjugation

Unconjugated

### Tested

WB

### Applications

### Immunogen

GABAA Receptor  $\alpha 1$  (CT) polyclonal antibody was raised against a fusion protein from the cytoplasmic loop of the rat GABAA-R  $\alpha 1$  subunit.

### Target

Gabra1

### Form/Appearance

Liquid

### Concentration

batch dependent

### Storage

For long term storage  $-80^{\circ}\text{C}$  is recommended, but shorter term storage at  $-20^{\circ}\text{C}$  is also acceptable as aliquots may be taken without freeze/thawing due to the presence of 50% glycerol. Stable for one year.

### Note

For research use only

### Application notes

GABAA Receptor antibody is specific for the 51k band of GABAA-R- $\alpha 1$ -subunit in rat brain membrane fractions. Initial recommended range of dilutions: 1:500 to 1:2000. Rabbit anti-GABAA Receptor  $\alpha 1$  (CT) recognizes bovine, human, mouse and rat GABAA-R- $\alpha 1$ -subunit. Applications include Dot Blots (DB) and Western Blot (WB). Suitability for Immunohistochemistry (IHC) not yet determined. When internally tested under ideal conditions the working dilutions were 1:1000 for DB and WB.

### Clonality

Polyclonal

### MW

51

### Uniprot ID

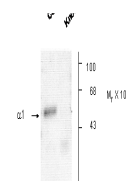
[P62813](#)

### NCBI

[P62813](#)

### Dilution Range

GABAA Receptor antibody is specific for the 51k band of GABAA-R- $\alpha 1$ -subunit in rat brain membrane fractions. Initial recommended range of dilutions: 1:500 to 1:2000. Rabbit anti-GABAA Receptor  $\alpha 1$  (CT) recognizes bovine, human, mouse and rat GABAA-R- $\alpha 1$ -subunit. Applications include Dot Blots (DB) and Western Blot (WB). Suitability for Immunohistochemistry (IHC) not yet determined. When internally tested under ideal conditions the working dilutions were 1:1000 for DB and WB.



GABA A  
Receptor  
 $\alpha 1$ , CT  
Antibody