

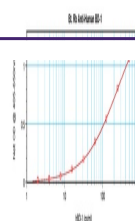
Product Datasheet

DEFB1 Antibody (Biotin) (orb1272783)

Description

DEFB1 Antibody (Biotin)

Species/Host	Rabbit
Reactivity	Human
Conjugation	Biotin
Tested Applications	ELISA, WB
Immunogen	Produced from sera of rabbits pre-immunized with highly pure (>98%) recombinant hBD-1. Human BD-1 specific antibody was purified by affinity chromatography and then biotinylated.
Target	DEFB1
Form/Appearance	Lyophilized
Concentration	batch dependent
Storage	BD-1 antibody is stable for at least 2 years from date of receipt at -20°C. The reconstituted antibody is stable for at least two weeks at 2-8°C. Frozen aliquots are stable for at least 6 months when stored at -20°C. Avoid repeated freeze-thaw cycles.
Note	For research use only
Application notes	ELISA: Sandwich: To detect hBD-1 by sandwich ELISA (using 100 µL/well antibody solution) a concentration of 0.25 - 1.0 µg/mL of this antibody is required. Western Blot: To detect hBD-1 by Western Blot analysis this antibody can be used at a concentration of 0.1 - 0.2 µL/mL. Used in conjunction with compatible secondary reagents the detection limit for recombinant hBD-1 is 1.5 - 3.0 ng/lane, under either reducing or non-reducing conditions.
Clonality	Polyclonal
Uniprot ID	P60022
NCBI	P60022
Dilution Range	ELISA: Sandwich: To detect hBD-1 by sandwich ELISA (using 100 µL/well antibody solution) a concentration of 0.25 - 1.0 µg/mL of this antibody is required. Western Blot: To detect hBD-1 by Western Blot analysis this antibody can be used at a concentration of 0.1 - 0.2 µL/mL. Used in conjunction with compatible secondary reagents the detection limit for recombinant hBD-1 is 1.5 - 3.0 ng/lane, under either reducing or non-reducing conditions.



To detect hBD-1 by sandwich ELISA (using...



To detect hBD-1 by Western Blot analysis...



To detect hBD-1 by Western Blot analysis...