

Product Datasheet

Ccl4 Antibody (orb1272750)

Description

Ccl4 Antibody

Species/Host

Rabbit

Reactivity

Mouse

Conjugation

Unconjugated

Tested

ELISA, NeA, WB

Applications

Immunogen

Produced from sera of rabbits pre-immunized with highly pure (>98%) recombinant mMIP-1 β . Murine MIP-1 β specific antibody was purified by affinity chromatography employing immobilized mMIP-1 β matrix.

Target

Ccl4

Form/Appearance

Lyophilized

Concentration

batch dependent

Storage

MIP-1B antibody is stable for at least 2 years from date of receipt at -20°C. The reconstituted antibody is stable for at least two weeks at 2-8°C. Frozen aliquots are stable for at least 6 months when stored at -20°C. Avoid repeated freeze-thaw cycles.

Note

For research use only

Application notes

Neutralization: To yield one-half maximal inhibition [ND50] of the biological activity of Murine MIP-1 β (100.0 ng/mL), a concentration of 8.0-10.0 μ g/mL of this antibody is required.
ELISA:Indirect:To detect mMIP-1b by indirect ELISA (using 100 μ L/well antibody solution) a concentration of 0.5 - 2.0 μ g/mL of this antibody is required. This antigen affinity purified antibody, in conjunction with compatible secondary reagents, allows the detection of at least 0.2 - 0.4 ng/well of recombinant mMIP-1b.
SandwichTo detect mMIP-1b by sandwich ELISA (using 100 μ L/well antibody solution) a concentration of 0.5 - 2.0 μ g/mL of this antibody is required. This antigen affinity purified antibody, in conjunction with our biotinylated Anti-Murine MIP-1b as a detection antibody, allows the detection of at least 0.2 - 0.4 ng/well of recombinant mMIP-1b. **Western Blot:**To detect mMIP-1b by Western Blot analysis this antibody can be used at a concentration of 0.1 - 0.2 μ g/mL. Used in conjunction with compatible secondary reagents the detection limit for recombinant mMIP-1b is 1.5 - 3.0 ng/lane, under either reducing or non-reducing conditions.

Clonality

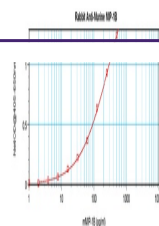
Polyclonal

Uniprot ID

P14097

NCBI

P14097



To detect
Murine MIP-1-
beta by
sandwich ...



To detect
Murine MIP-1-
beta by
Western B...



To detect
Murine MIP-1-
beta by
Western B...