

Product Datasheet

TNFSF18 Antibody (orb1272727)

Description

TNFSF18 Antibody

Species/Host

Rabbit

Reactivity

Human

Conjugation

Unconjugated

Tested

ELISA, WB

Applications

Immunogen

Produced from sera of rabbits pre-immunized with highly pure (>98%) recombinant hAITRL. Human AITRL specific antibody was purified by affinity chromatography employing immobilized hAITRL matrix.

Target

TNFSF18

Form/Appearance

Lyophilized

Concentration

batch dependent

Storage

AITRL antibody is stable for at least 2 years from date of receipt at -20°C. The reconstituted antibody is stable for at least two weeks at 2-8°C. Frozen aliquots are stable for at least 6 months when stored at -20°C. Avoid repeated freeze-thaw cycles.

Note

For research use only

Application notes

ELISA:Indirect:To detect hAITRL by indirect ELISA (using 100 µL/well antibody solution) a concentration of 0.5 - 2.0 µg/mL of this antibody is required. This antigen affinity purified antibody, in conjunction with compatible secondary reagents, allows the detection of at least 0.2 - 0.4 ng/well of recombinant hAITRL.
SandwichTo detect hAITRL by sandwich ELISA (using 100 µL/well antibody solution) a concentration of 0.5 - 2.0 µg/mL of this antibody is required. This antigen affinity purified antibody, in conjunction with our biotinylated Anti-Human AITRL as a detection antibody, allows the detection of at least 0.2 - 0.4 ng/well of recombinant hAITRL. **Western Blot:**To detect hAITRL by Western Blot analysis this antibody can be used at a concentration of 0.1 - 0.2 µg/mL. Used in conjunction with compatible secondary reagents the detection limit for recombinant hAITRL is 1.5 - 3.0 ng/lane, under either reducing or non-reducing conditions.

Clonality

Polyclonal

Uniprot ID

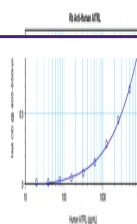
[Q9UNG2](#)

NCBI

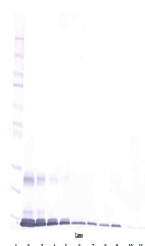
[Q9UNG2](#)

Dilution Range

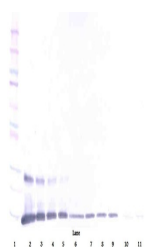
ELISA:Indirect:To detect hAITRL by indirect ELISA (using



To detect hAITRL by sandwich ELISA (usin...



To detect hAITRL by Western Blot analysi...



To detect hAITRL by Western Blot analysi...