

Product Datasheet

TIMP1 Antibody (orb1272681)

Description

TIMP1 Antibody

Species/Host

Rabbit

Reactivity

Human

Conjugation

Unconjugated

Tested

ELISA, NeA, WB

Applications

Immunogen

Produced from sera of rabbits pre-immunized with highly pure (>98%) recombinant hTIMP-1 (human Tissue Inhibitor of Metalloproteinases-1). Human TIMP-1 specific antibody was purified by affinity chromatography employing immobilized hTIMP-1 matrix.

Target

TIMP1

Form/Appearance

Lyophilized

Concentration

batch dependent

Storage

TIMP-1 antibody is stable for at least 2 years from date of receipt at -20°C. The reconstituted antibody is stable for at least two weeks at 2-8°C. Frozen aliquots are stable for at least 6 months when stored at -20°C. Avoid repeated freeze-thaw cycles.

Note

For research use only

Application notes

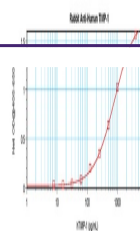
Neutralization:To yield one-half maximal inhibition [ND50] of the biological activity of Human TIMP-1 (3.0 µg/mL), a concentration of 5.0 µg/mL of this antibody is required.
ELISA:Indirect:To detect hTIMP-1 by indirect ELISA (using 100 µL/well antibody solution) a concentration of 0.5 - 2.0 µg/mL of this antibody is required. This antigen affinity purified antibody, in conjunction with compatible secondary reagents, allows the detection of at least 0.2 - 0.4 ng/well of recombinant hTIMP-1.
SandwichTo detect hTIMP-1 by sandwich ELISA (using 100 µL/well antibody solution) a concentration of 0.5 - 2.0 µg/mL of this antibody is required. This antigen affinity purified antibody, in conjunction with our biotinylated Anti-Human TIMP-1 as a detection antibody, allows the detection of at least 0.2 - 0.4 ng/well of recombinant hTIMP-1. **Western Blot:**To detect hTIMP-1 by Western Blot analysis this antibody can be used at a concentration of 0.1 - 0.2 µg/mL. Used in conjunction with compatible secondary reagents the detection limit for recombinant hTIMP-1 is 1.5 - 3.0 ng/lane, under either reducing or non-reducing conditions.

Clonality

Polyclonal

Uniprot ID

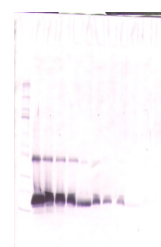
P01033



To detect hTIMP-1 by sandwich ELISA (usi...



To detect hTIMP-1 by Western Blot analys...



To detect hTIMP-1 by Western Blot analys...