

Product Datasheet

CCL3 Antibody (orb1272676)

Description

CCL3 Antibody

Species/Host

Rabbit

Reactivity

Human

Conjugation

Unconjugated

Tested

ELISA, WB

Applications

Immunogen

Produced from sera of rabbits pre-immunized with highly pure (>98%) recombinant hMIP-1a (human MIP-1 alpha). Human MIP-1a specific antibody was purified by affinity chromatography employing immobilized hMIP-1a matrix.

Target

CCL3

Form/Appearance

Lyophilized

Concentration

batch dependent

Storage

MIP-1a antibody is stable for at least 2 years from date of receipt at -20°C. The reconstituted antibody is stable for at least two weeks at 2-8°C. Frozen aliquots are stable for at least 6 months when stored at -20°C. Avoid repeated freeze-thaw cycles.

Note

For research use only

Application notes

ELISA:Indirect:To detect hMIP-1a by indirect ELISA (using 100 µL/well antibody solution) a concentration of 0.5 - 2.0 µg/mL of this antibody is required. This antigen affinity purified antibody, in conjunction with compatible secondary reagents, allows the detection of at least 0.2 - 0.4 ng/well of recombinant hMIP-1a.
SandwichTo detect hMIP-1a by sandwich ELISA (using 100 µL/well antibody solution) a concentration of 0.5 - 2.0 µg/mL of this antibody is required. This antigen affinity purified antibody, in conjunction with our biotinylated Anti-Human MIP-1a as a detection antibody, allows the detection of at least 0.2 - 0.4 ng/well of recombinant hMIP-1a. **Western Blot:**To detect hMIP-1a by Western Blot analysis this antibody can be used at a concentration of 0.1 - 0.2 µg/mL. Used in conjunction with compatible secondary reagents the detection limit for recombinant hMIP-1a is 1.5 - 3.0 ng/lane, under either reducing or non-reducing conditions

Clonality

Polyclonal

Uniprot ID

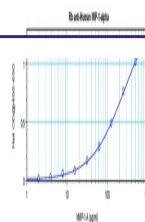
P10147

NCBI

P10147

Dilution Range

ELISA:Indirect:To detect hMIP-1a by indirect ELISA (using



To detect Human MIP-1-alpha by sandwich ...



To detect Human MIP-1-alpha by Western B...



To detect Human MIP-1-alpha by Western B...