

Product Datasheet

IGFBP7 Antibody (orb1272658)

Description

IGFBP7 Antibody

Species/Host

Rabbit

Reactivity

Human

Conjugation

Unconjugated

Tested

ELISA, WB

Applications

Immunogen

Produced from sera of rabbits pre-immunized with highly pure (>98%) recombinant hIGF-BP3. Human IGF-BP3 specific antibody was purified by affinity chromatography employing immobilized hIGF-BP3 matrix.

Target

IGFBP7

Form/Appearance

Lyophilized

Concentration

batch dependent

Storage

The lyophilized antibody is stable for at least 2 years from date of receipt at -20°C. The reconstituted antibody is stable for at least two weeks at 2-80°C. Frozen aliquots are stable for at least 6 months when stored at -20°C. Avoid repeated freeze-thaw cycles.

Note

For research use only

Application notes

ELISA:Indirect:To detect hIGF-BP7 by indirect ELISA (using 100 µL/well antibody solution) a concentration of 0.5 - 2.0 µg/mL of this antibody is required. This antigen affinity purified antibody, in conjunction with compatible secondary reagents, allows the detection of at least 0.2 - 0.4 ng/well of recombinant hIGF-BP7. **Sandwich**To detect hIGF-BP7 by sandwich ELISA (using 100 µL/well antibody solution) a concentration of 0.5 - 2.0 µg/mL of this antibody is required. This antigen affinity purified antibody, in conjunction with our Biotinylated Anti-Human IGF-BP7 (38-155) as a detection antibody, allows the detection of at least 0.2 - 0.4 ng/well of recombinant hIGF-BP7. **Western Blot:**To detect hIGF-BP7 by Western Blot analysis this antibody can be used at a concentration of 0.1 - 0.2 µg/mL. Used in conjunction with compatible secondary reagents the detection limit for recombinant hIGF-BP7 is 1.5 - 3.0 ng/lane, under either reducing or non-reducing conditions.

Clonality

Polyclonal

Uniprot ID

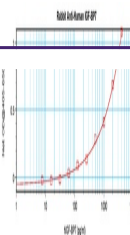
[Q16270](#)

NCBI

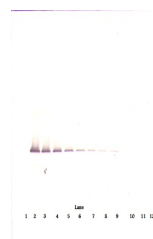
[Q16270](#)

Dilution Range

ELISA:Indirect:To detect hIGF-BP7 by indirect ELISA (using



To detect hIGF-BP7 by sandwich ELISA (us...



To detect hIGF-BP7 by Western Blot analy...



To detect hIGF-BP7 by Western Blot analy...