

## Product Datasheet

### Cxcl16 Antibody (orb1272573)

## Description

## Cxcl16 Antibody

### Species/Host

Rabbit

### Reactivity

Mouse

### Conjugation

Unconjugated

### Tested

ELISA, WB

### Applications

### Immunogen

Produced from sera of goats pre-immunized with highly pure (>98%) recombinant mCXCL16 (Murine CXCL16).

### Target

Cxcl16

### Form/Appearance

Lyophilized

### Concentration

batch dependent

### Storage

CXCL16 antibody is stable for at least 2 years from date of receipt at -20°C. The reconstituted antibody is stable for at least two weeks at 2-8°C. Frozen aliquots are stable for at least 6 months when stored at -20°C. Avoid repeated freeze-thaw cycles.

### Note

For research use only

### Clonality

Polyclonal

### Uniprot ID

[Q8BSU2](#)

### NCBI

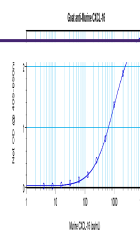
[Q8BSU2](#)

### Dilution Range

ELISA: To detect mCXCL16 by direct ELISA (using 100 µL/well antibody solution) a concentration of at least 0.5 µg/mL of this antibody is required. This antigen affinity purified antibody, in conjunction with compatible secondary reagents, allows the detection of 0.2 - 0.4 ng/well of recombinant mCXCL16. Sandwich: To detect mCXCL16 by sandwich ELISA (using 100 µL/well antibody solution) a concentration of 0.5 - 2.0 µg/mL of this antibody is required. This antigen affinity purified antibody, in conjunction with our Biotinylated Anti-Murine CXCL16 as a detection antibody, allows the detection of at least 0.2 - 0.4 ng/well of recombinant mCXCL16. Western Blot: To detect mCXCL16 by Western Blot analysis this antibody can be used at a concentration of 0.1 - 0.2 µg/mL. Used in conjunction with compatible secondary reagents the detection limit for recombinant mCXCL16 is 1.5 - 3.0 ng/lane, under either reducing or non-reducing conditions.

### Expiration Date

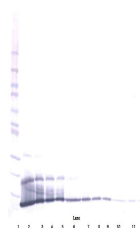
12 months from date of receipt.



To detect  
mCXCL16 by  
sandwich  
ELISA (usi...



To detect  
mCXCL16 by  
Western Blot  
analys...



To detect  
mCXCL16 by  
Western Blot  
analys...