

## Product Datasheet

### FGF2 Antibody (orb1272539)

## Description

## FGF2 Antibody

### Species/Host

Rabbit

### Reactivity

Human

### Conjugation

Unconjugated

### Tested

ELISA, NeA, WB

### Applications

### Immunogen

Produced from sera of rabbits pre-immunized with highly pure (>98%) recombinant hFGF-Basic (human Fibroblast Growth Factor-Basic).

### Target

FGF2

### Form/Appearance

Lyophilized

### Concentration

batch dependent

### Storage

FGF-basic antibody is stable for at least 2 years from date of receipt at -20°C. The reconstituted antibody is stable for at least two weeks at 2-8°C. Frozen aliquots are stable for at least 6 months when stored at -20°C. Avoid repeated freeze-thaw cycles.

### Note

For research use only

### Clonality

Polyclonal

### Uniprot ID

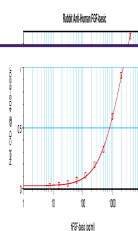
[P09038](#)

### NCBI

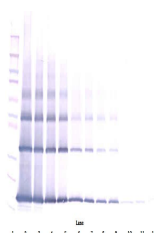
[P09038](#)

### Dilution Range

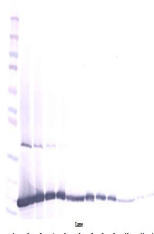
Neutralization: To yield one-half maximal inhibition [ND50] of the biological activity of hFGF-Basic (30.0 ng/mL), a concentration of 0.46 - 0.9 µg/mL of this antibody is required. ELISA: To detect hFGF-Basic by direct ELISA (using 100 µL/well antibody solution) a concentration of at least 0.5 µg/mL of this antibody is required. This antigen affinity purified antibody, in conjunction with compatible secondary reagents, allows the detection of 0.2 - 0.4 ng/well of recombinant hFGF-Basic. Sandwich: To detect hFGF-basic by sandwich ELISA (using 100 µL/well antibody solution) a concentration of 0.5 - 2.0 µg/mL of this antibody is required. This antigen affinity purified antibody, in conjunction with our Biotinylated Anti-Human FGF-basics as a detection antibody, allows the detection of at least 0.2 - 0.4 ng/well of recombinant hFGF-basic. Western Blot: To detect hFGF-Basic by Western Blot analysis this antibody can be used at a concentration of 0.1 - 0.2 µg/mL. Used in conjunction with compatible secondary reagents the detection limit for recombinant hFGF-Basic is 1.5 - 3.0 ng/lane, under either reducing or non-reducing conditions.



To detect Human FGF-basic by sandwich EL...



To detect Human FGF-basic by Western Blo...



To detect Human FGF-basic by Western Blo...