

Product Datasheet

CCL1 Antibody (orb1272511)

Description

CCL1 Antibody

Species/Host

Rabbit

Reactivity

Human

Conjugation

Unconjugated

Tested

ELISA, WB

Applications

Immunogen

Produced from sera of rabbits pre-immunized with highly pure (>98%) recombinant hI-309 (human I-309).

Target

CCL1

Form/Appearance

Lyophilized

Concentration

batch dependent

Storage

I-309 antibody is stable for at least 2 years from date of receipt at -20°C. The reconstituted antibody is stable for at least two weeks at 2-8°C. Frozen aliquots are stable for at least 6 months when stored at -20°C. Avoid repeated freeze-thaw cycles.

Note

For research use only

Clonality

Polyclonal

Uniprot ID

[P22362](#)

NCBI

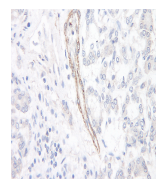
[P22362](#)

Dilution Range

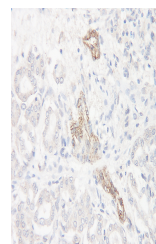
ELISA: To detect hI-309 by direct ELISA (using 100 µL/well antibody solution) a concentration of at least 0.5 µg/mL of this antibody is required. This antigen affinity purified antibody, in conjunction with compatible secondary reagents, allows the detection of 0.2 - 0.4 ng/well of recombinant hI-309. Sandwich: To detect hI-309 by sandwich ELISA (using 100 µL/well antibody solution) a concentration of 0.5 - 2.0 µg/mL of this antibody is required. This antigen affinity purified antibody, in conjunction with our Biotinylated Anti-Human I-309 as a detection antibody, allows the detection of at least 0.2 - 0.4 ng/well of recombinant hI-309. Western Blot: To detect hI-309 by Western Blot analysis this antibody can be used at a concentration of 0.1 - 0.2 µg/mL. Used in conjunction with compatible secondary reagents the detection limit for recombinant hI-309 is 1.5 - 3.0 ng/lane, under either reducing or non-reducing conditions.

Expiration Date

12 months from date of receipt.



This antibody stained formalin-fixed, pa...



This antibody stained formalin-fixed, pa...