

Product Datasheet

Cxcl10 Antibody (orb1272428)

Description

Cxcl10 Antibody

Species/Host

Rabbit

Reactivity

Mouse

Conjugation

Unconjugated

Tested

ELISA, NeA, WB

Applications

Immunogen

Produced from sera of rabbits pre-immunized with highly pure (>98%) recombinant mIP-10 (murine IP-10).

Target

Cxcl10

Form/Appearance

Lyophilized

Concentration

batch dependent

Storage

IP-10 antibody is stable for at least 2 years from date of receipt at -20°C. The reconstituted antibody is stable for at least two weeks at 2-8°C. Frozen aliquots are stable for at least 6 months when stored at -20°C. Avoid repeated freeze-thaw cycles.

Note

For research use only

Clonality

Polyclonal

Uniprot ID

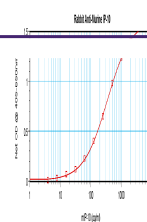
P17515

NCBI

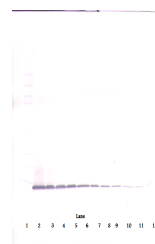
P17515

Dilution Range

Neutralization: To yield one-half maximal inhibition [ND50] of the biological activity of mIP-10 (15.00 ng/mL), a concentration of 0.5 0.9 µg/mL of this antibody is required. ELISA:To detect mIP-10 by direct ELISA (using 100 µL/well antibody solution) a concentration of at least 0.5 µg/mL of this antibody is required. This antigen affinity purified antibody, in conjunction with compatible secondary reagents, allows the detection of 0.2 - 0.4 ng/well of recombinant mIP-10. Sandwich:br>To detect mIP-10 by sandwich ELISA (using 100 µL/well antibody solution) a concentration of 0.5 - 2.0 µg/mL of this antibody is required. This antigen affinity purified antibody, in conjunction with our Biotinylated Anti-Murine IP-10as a detection antibody, allows the detection of at least 0.2 - 0.4 ng/well of recombinant mIP-10.Western Blot:To detect mIP-10 by Western Blot analysis this antibody can be used at a concentration of 0.1 - 0.2 ng/mL. Used in conjunction with compatible secondary reagents the detection limit for recombinant mIP-10 is 1.5 - 3.0 ng/lane, under either reducing or non-reducing conditions.



To detect mIP-10 by sandwich ELISA (usin...



To detect mIP-10 by Western Blot analysi...



To detect mIP-10 by Western Blot analysi...