

Product Datasheet

rpoH Antibody (orb1272414)

Description

rpoH Antibody

Species/Host

Rabbit

Reactivity

Human

Conjugation

Unconjugated

Tested

ELISA, WB

Applications

Immunogen

Produced from sera of rabbits pre-immunized with highly pure (>98%) recombinant hLeptin (human Leptin).

Target

rpoH

Form/Appearance

Lyophilized

Concentration

batch dependent

Storage

Leptin antibody is stable for at least 2 years from date of receipt at -20°C. The reconstituted antibody is stable for at least two weeks at 2-8°C. Frozen aliquots are stable for at least 6 months when stored at -20°C. Avoid repeated freeze-thaw cycles.

Note

For research use only

Clonality

Polyclonal

Uniprot ID

[P41559](#)

NCBI

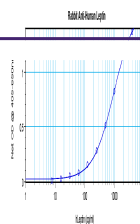
[P41559](#)

Dilution Range

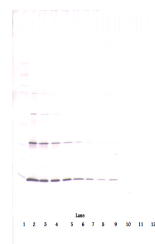
ELISA:To detect hLeptin by direct ELISA (using 100 µL/well antibody solution) a concentration of at least 0.5 umg/mL of this antibody is required. This antigen affinity purified antibody, in conjunction with compatible secondary reagents, allows the detection of 0.2 - 0.4 ng/well of recombinant hLeptin. Sandwich:To detect hLeptin by sandwich ELISA (using 100 µL/well antibody solution) a concentration of 0.5 - 2.0 µg/mL of this antibody is required. This antigen affinity purified antibody, in conjunction with our Biotinylated Anti-Human Leptinas a detection antibody, allows the detection of at least 0.2 - 0.4 ng/well of recombinant hLeptin.Western Blot:To detect hLeptin by Western Blot analysis this antibody can be used at a concentration of 0.1 - 0.2 µg/mL. Used in conjunction with compatible secondary reagents the detection limit for recombinant hLeptin is 1.5 - 3.0 ng/lane, under either reducing or non-reducing conditions.

Expiration Date

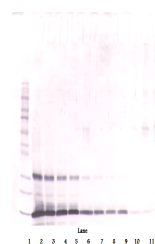
12 months from date of receipt.



To detect hLeptin by sandwich ELISA (usi...



To detect hLeptin by Western Blot analys...



To detect hLeptin by Western Blot analys...