

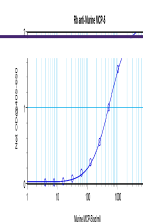
Product Datasheet

Ccl12 Antibody (orb1272388)

Description

Ccl12 Antibody

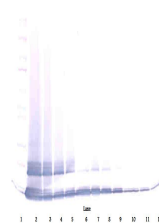
Species/Host	Rabbit
Reactivity	Mouse
Conjugation	Unconjugated
Tested Applications	ELISA, NeA, WB
Immunogen	Produced from sera of rabbits pre-immunized with highly pure (>98%) recombinant mMCP-5 (murine MCP-5).
Target	Ccl12
Form/Appearance	Lyophilized
Concentration	batch dependent
Storage	MCP-5 antibody is stable for at least 2 years from date of receipt at -20°C. The reconstituted antibody is stable for at least two weeks at 2-8°C. Frozen aliquots are stable for at least 6 months when stored at -20°C. Avoid repeated freeze-thaw cycles.
Note	For research use only
Clonality	Polyclonal
Uniprot ID	Q62401
NCBI	Q62401
Dilution Range	Neutralization: To yield one-half maximal inhibition [ND50] of the biological activity of mMCP-5 (100 ng/mL), a concentration of 2.0 - 3.0 µg/mL of this antibody is required. ELISA:To detect mMCP-5 by direct ELISA (using 100 µg/mL of this µL/well antibody solution) a concentration of at least 0.5 antibody is required. This antigen affinity purified antibody, in conjunction with compatible secondary reagents, allows the detection of 0.2 - 0.4 ng/well of recombinant mMCP-5. Sandwich:To detect mMCP-5 by sandwich ELISA (using 100 µL/well antibody solution) a concentration of 0.5 - 2.0 µg/mL of this antibody is required. This antigen affinity purified antibody, in conjunction with our Biotinylated Anti-Murine MCP-5as a detection antibody, allows the detection of at least 0.2 - 0.4 ng/well of recombinant mMCP-5.Western Blot:To detect mMCP-5 by Western Blot analysis this antibody can be used at a concentration of 0.1 - 0.2 µg/mL. Used in conjunction with compatible secondary reagents the detection limit for recombinant mMCP-5 is 1.5 - 3.0 ng/lane, under either reducing or non-reducing conditions.



To detect mMCP-5 by sandwich ELISA (usin...



To detect mMCP-5 by Western Blot analysi...



To detect mMCP-5 by Western Blot analysi...