

Product Datasheet

Ccl3 Antibody (orb1272373)

Description

Ccl3 Antibody

Species/Host

Rabbit

Reactivity

Mouse

Conjugation

Unconjugated

Tested Applications

ELISA, NeA, WB

Immunogen

Produced from sera of rabbits pre-immunized with highly pure (>98%) recombinant mMIP-1-alpha (murine Macrophage Inflammatory Protein-1-alpha).

Target

Ccl3

Form/Appearance

Lyophilized

Concentration

batch dependent

Storage

MIP-1a antibody is stable for at least 2 years from date of receipt at -20°C. The reconstituted antibody is stable for at least two weeks at 2-8°C. Frozen aliquots are stable for at least 6 months when stored at -20°C. Avoid repeated freeze-thaw cycles.

Note

For research use only

Clonality

Polyclonal

Uniprot ID

[P10855](#)

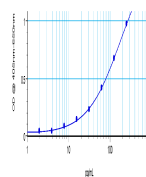
NCBI

[P10855](#)

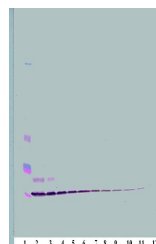
Dilution Range

Neutralization: To yield one-half maximal inhibition [ND50] of the biological activity of mMIP-1-alpha (10 ng/mL), a concentration of 2.0 - 5.0 µg/mL of this antibody is required. ELISA: To detect mMIP-1-alpha by direct ELISA (using 100 µL/well antibody solution) a concentration of at least 0.5 µg/mL of this antibody is required. This antigen affinity purified antibody, in conjunction with compatible secondary reagents, allows the detection of 0.2 - 0.4 ng/well of recombinant mMIP-1-alpha. Sandwich: To detect hMIP-1α by sandwich ELISA (using 100 µL/well antibody solution) a concentration of 0.5 - 2.0 µg/mL of this antibody is required. This antigen affinity purified antibody, in conjunction with our Biotinylated Anti-Murine MIP-1α as a detection antibody, allows the detection of at least 0.2 - 0.4 ng/well of recombinant hMIP-1α. Western Blot: To detect mMIP-1-alpha by Western Blot analysis this antibody can be used at a concentration of 0.1 - 0.2 µg/mL. Used in conjunction with compatible secondary reagents the detection limit for recombinant mMIP-1-alpha is 1.5 - 3.0 ng/lane, under either reducing or non-reducing conditions.

ELISA



To detect Murine MIP-1-alpha by sandwich...



To detect Murine MIP-1-alpha by Western ...



To detect Murine MIP-1-alpha by Western ...