

Product Datasheet

Ccl9 Antibody (Biotin) (orb1272368)

Description

Ccl9 Antibody (Biotin)

Species/Host

Rabbit

Reactivity

Mouse

Conjugation

Biotin

Tested

ELISA, WB

Applications

Immunogen

Produced from sera of rabbits pre-immunized with highly pure (>98%) recombinant mMIP-1-gamma (murine MIP-1-gamma).

Target

Ccl9

Form/Appearance

Lyophilized

Concentration

batch dependent

Storage

MIP-1gamma antibody is stable for at least 2 years from date of receipt at -20°C. The reconstituted antibody is stable for at least two weeks at 2-8°C. Frozen aliquots are stable for at least 6 months when stored at -20°C. Avoid repeated freeze-thaw cycles.

Note

For research use only

Application notes

ELISA: Sandwich: To detect mMIP-1γ by sandwich ELISA (using 100 μL/well antibody solution) a concentration of 0.25 - 1.0 μg/mL of this antibody is required. This biotinylated polyclonal antibody, in conjunction with our Polyclonal Anti-Murine MIP-1γ (XP-5236) as a capture antibody, allows the detection of at least 0.2 - 0.4 ng/well of recombinant mMIP-1γ. Western Blot: To detect mMIP-1γ by Western Blot analysis this antibody can be used at a concentration of 0.1 - 0.2 μg/mL. Used in conjunction with compatible secondary reagents the detection limit for recombinant mMIP-1γ is 1.5 - 3.0 ng/lane, under either reducing or non-reducing conditions.

Clonality

Polyclonal

Uniprot ID

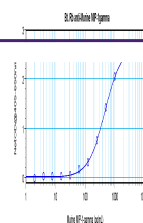
P51670

NCBI

P51670

Dilution Range

ELISA: Sandwich: To detect mMIP-1γ by sandwich ELISA (using 100 μL/well antibody solution) a concentration of 0.25 - 1.0 μg/mL of this antibody is required. This biotinylated polyclonal antibody, in conjunction with our Polyclonal Anti-Murine MIP-1γ (XP-5236) as a capture antibody, allows the detection of at least 0.2 - 0.4 ng/well of recombinant mMIP-1γ. Western Blot: To detect mMIP-1γ by Western Blot analysis this antibody can be used at a



To detect
Murine MIP-
1-gamma by
sandwich...