

Product Datasheet

CCL20 Antibody (orb1272361)

Description

CCL20 Antibody

Species/Host

Rabbit

Reactivity

Human

Conjugation

Unconjugated

Tested Applications

ELISA, NeA, WB

Immunogen

Produced from sera of rabbits pre-immunized with highly pure (>98%) recombinant hMIP-3 β (human Macrophage Inflammatory Protein-3 beta).

Target

CCL20

Form/Appearance

Lyophilized

Concentration

batch dependent

Storage

MIP-3 β antibody is stable for at least 2 years from date of receipt at -20°C. The reconstituted antibody is stable for at least two weeks at 2-8°C. Frozen aliquots are stable for at least 6 months when stored at -20°C. Avoid repeated freeze-thaw cycles.

Note

For research use only

Clonality

Polyclonal

Uniprot ID

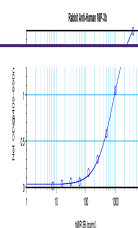
[P78556](#)

NCBI

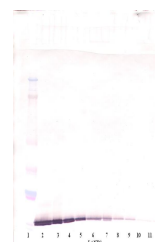
[P78556](#)

Dilution Range

Neutralization: To yield one-half maximal inhibition [ND50] of the biological activity of hMIP-3 β (100 ng/mL), a concentration of 2.7 4.0 μ g/mL of this antibody is required. ELISA:To detect hMIP-3 β by direct ELISA (using 100 μ L/well antibody solution) a concentration of at least 0.5 μ g/mL of this antibody is required. This antigen affinity purified antibody, in conjunction with compatible secondary reagents, allows the detection of 0.2 - 0.4 ng/well of recombinant hMIP-3 β . Sandwich:To detect hMIP-3 β by sandwich ELISA (using 100 μ L/well antibody solution) a concentration of 0.5 - 2.0 μ g/mL of this antibody is required. This antigen affinity purified antibody, in conjunction with our Biotinylated Anti-Human MIP-3 β as a detection antibody, allows the detection of at least 0.2 - 0.4 ng/well of recombinant hMIP-3 β . Western Blot:To detect hMIP-3 β by Western Blot analysis this antibody can be used at a concentration of 0.1 - 0.2 μ g/mL. Used in conjunction with compatible secondary reagents the detection limit for recombinant hMIP-3 β is 1.5 - 3.0 ng/lane, under either reducing or non-reducing conditions.



To detect Human MIP-3-beta by sandwich E...



To detect Human MIP-3-beta by Western Bl...



To detect Human MIP-3-beta by Western Bl...