

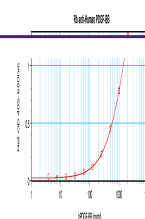
Product Datasheet

PDGFB Antibody (orb1272340)

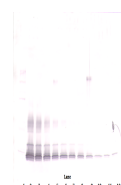
Description

PDGFB Antibody

Species/Host	Rabbit
Reactivity	Human
Conjugation	Unconjugated
Tested Applications	ELISA, NeA, WB
Immunogen	Produced from sera of rabbits pre-immunized with highly pure (>98%) recombinant hPDGF-BB.
Target	PDGFB
Form/Appearance	Lyophilized
Concentration	batch dependent
Storage	PDGF-BB antibody is stable for at least 2 years from date of receipt at -20°C. The reconstituted antibody is stable for at least two weeks at 2-8°C. Frozen aliquots are stable for at least 6 months when stored at -20°C. Avoid repeated freeze-thaw cycles.
Note	For research use only
Clonality	Polyclonal
Uniprot ID	P01127
NCBI	P01127
Dilution Range	Neutralization: To yield one-half maximal inhibition [ND50] of the biological activity of hPDGF-BB (10.0 ng/mL), a concentration of 0.05 - 0.07 µg/mL of this antibody is required. ELISA:To detect hPDGF-BB by direct ELISA (using 100 µL/well antibody solution) a concentration of at least 0.5 µg/mL of this antibody is required. This antigen affinity purified antibody, in conjunction with compatible secondary reagents, allows the detection of 0.2 - 0.4 ng/well of recombinant hPDGF-BB. Sandwich:To detect hPDGF-BB by sandwich ELISA (using 100 µL/well antibody solution) a concentration of 0.5 - 2.0 µg/mL of this antibody is required. This antigen affinity purified antibody, in conjunction with our Biotinylated Anti-Human PDGF-BB as a detection antibody, allows the detection of at least 0.2 - 0.4 ng/well of recombinant hPDGF-BB. Western Blot:To detect hPDGF-BB by Western Blot analysis this antibody can be used at a concentration of 0.1 - 0.2 µg/mL. Used in conjunction with compatible secondary reagents the detection limit for recombinant hPDGF-BB is 1.5 - 3.0 ng/lane, under either reducing or non-reducing conditions.



To detect hPDGF-BB by sandwich ELISA (us...



To detect hPDGF-BB by Western Blot analy...



To detect hPDGF-BB by Western Blot analy...