

## Product Datasheet

### Ccl5 Antibody (orb1272332)

## Description

## Ccl5 Antibody

### Species/Host

Rabbit

### Reactivity

Mouse

### Conjugation

Unconjugated

### Tested

ELISA, NeA, WB

### Applications

### Immunogen

Produced from sera of rabbits pre-immunized with highly pure (>98%) recombinant mRANTES (murine RANTES).

### Target

Ccl5

### Form/Appearance

Lyophilized

### Concentration

batch dependent

### Storage

RANTES antibody is stable for at least 2 years from date of receipt at -20°C. The reconstituted antibody is stable for at least two weeks at 2-8°C. Frozen aliquots are stable for at least 6 months when stored at -20°C. Avoid repeated freeze-thaw cycles.

### Note

For research use only

### Clonality

Polyclonal

### Uniprot ID

[P30882](#)

### NCBI

[P30882](#)

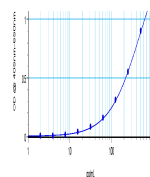
### Dilution Range

Neutralization: To yield one-half maximal inhibition [ND50] of the biological activity of mRANTES (100.00 ng/mL), a concentration of 6.0 - 8.0 µg/mL of this antibody is required. ELISA: To detect mRANTES by direct ELISA (using 100 µL/well antibody solution) a concentration of at least 0.5 µg/mL of this antibody is required. This antigen affinity purified antibody, in conjunction with compatible secondary reagents, allows the detection of 0.2 - 0.4 ng/well of recombinant mRANTES. Sandwich: To detect mRANTES by sandwich ELISA (using 100 µL/well antibody solution) a concentration of 0.5 - 2.0 µg/mL of this antibody is required. This antigen affinity purified antibody, in conjunction with our Biotinylated Anti-Murine RANTES as a detection antibody, allows the detection of at least 0.2 - 0.4 ng/well of recombinant mRANTES. Western Blot: To detect mRANTES by Western Blot analysis this antibody can be used at a concentration of 0.1 - 0.2 µg/mL. Used in conjunction with compatible secondary reagents the detection limit for recombinant mRANTES is 1.5 - 3.0 ng/lane, under either reducing or non-reducing conditions.

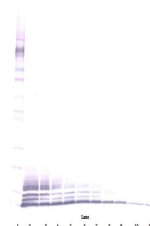
### Expiration Date

12 months from date of receipt.

Table 1: mRANTES



To detect mRANTES by sandwich ELISA (usi...



To detect mRANTES by Western Blot analys...



To detect mRANTES by Western Blot analys...