

Product Datasheet

TNFSF10 Antibody (orb1272279)

Description

TNFSF10 Antibody

Species/Host

Rabbit

Reactivity

Human

Conjugation

Unconjugated

Tested Applications

ELISA, NeA, WB

Applications

Immunogen

Produced from sera of rabbits pre-immunized with highly pure (>98%) recombinant hTRAIL/Apo2L (humanTRAIL/Apo2L).

Target

TNFSF10

Form/Appearance

Lyophilized

Concentration

batch dependent

Storage

TRAIL/Apo2L antibody is stable for at least 2 years from date of receipt at -20°C. The reconstituted antibody is stable for at least two weeks at 2-8°C. Frozen aliquots are stable for at least 6 months when stored at -20°C. Avoid repeated freeze-thaw cycles.

Note

For research use only

Clonality

Polyclonal

Uniprot ID

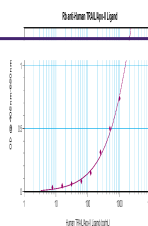
[P50591](#)

NCBI

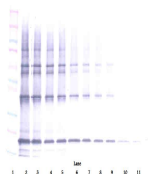
[P50591](#)

Dilution Range

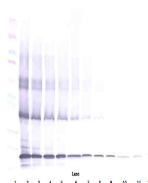
Neutralization: To yield one-half maximal inhibition [ND50] of the biological activity of hTRAIL/Apo2L (30 ng/mL), a concentration of 0.5 - 0.8 µg/mL of this antibody is required. ELISA: To detect hTRAIL/Apo2L by direct ELISA (using 100 µL/well antibody solution) a concentration of at least 0.5 µg/mL of this antibody is required. This antigen affinity purified antibody, in conjunction with compatible secondary reagents, allows the detection of 0.2 - 0.4 ng/well of recombinant hTRAIL/Apo2L. Sandwich: To detect hTRAIL/Apo2L by sandwich ELISA (using 100 µL/well antibody solution) a concentration of 0.5 - 2.0 µg/mL of this antibody is required. This antigen affinity purified antibody, in conjunction with our Biotinylated Anti-Human TRAIL/Apo2L as a detection antibody, allows the detection of at least 0.2 - 0.4 ng/well of recombinant hTRAIL/Apo2L. Western Blot: To detect hTRAIL/Apo2L by Western Blot analysis this antibody can be used at a concentration of 0.1 - 0.2 µg/mL. Used in conjunction with compatible secondary reagents the detection limit for recombinant hTRAIL/Apo2L is 1.5 - 3.0 ng/lane, under either reducing or non-reducing conditions.



To detect
hsTRAIL/Apo2L
by sandwich
ELIS...



To detect
hsTRAIL/Apo2L
by Western
Blot ...



To detect
hsTRAIL/Apo2L
by Western
Blot ...