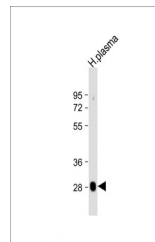


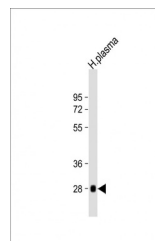
Product Datasheet

CFD Antibody (orb1269800)

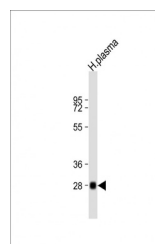
Description	CFD Antibody
Species/Host	Rabbit
Reactivity	Human
Conjugation	Unconjugated
Tested Applications	IHC-P, WB
Immunogen	This CFD antibody is generated from rabbits immunized with a KLH conjugated synthetic peptide between 68-99 amino acids from the N-terminal region of human CFD.
Target	CFD
Preservatives	Supplied in PBS with 0.09% (W/V) sodium azide.
Form/Appearance	Liquid
Concentration	batch dependent
Storage	Store at 4°C for three months and -20°C, stable for up to one year. As with all antibodies care should be taken to avoid repeated freeze thaw cycles. Antibodies should not be exposed to prolonged high temperatures.
Note	For research use only
Application notes	For WB starting dilution is: 1:2000
Isotype	Rabbit IgG
Clonality	Polyclonal
MW	27 kDa
Uniprot ID	P00746
NCBI	P00746
Dilution Range	For WB starting dilution is: 1:2000
Expiration Date	12 months from date of receipt.



Western Blot
at 1:2000
dilution +
human ...



Western Blot
at 1:2000
dilution +
human ...



Western Blot
at 1:2000
dilution +
human ...