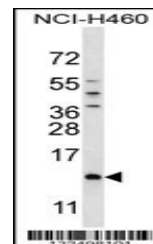


Product Datasheet

SMCP Antibody (orb1269356)

Description	SMCP Antibody
Species/Host	Rabbit
Reactivity	Human
Conjugation	Unconjugated
Tested Applications	WB
Immunogen	This SMCP antibody is generated from rabbits immunized with a KLH conjugated synthetic peptide between 68-97 amino acids from the C-terminal region of human SMCP.
Target	SMCP
Preservatives	Supplied in PBS with 0.09% (W/V) sodium azide.
Form/Appearance	Liquid
Concentration	batch dependent
Storage	Store at 4°C for three months and -20°C, stable for up to one year. As with all antibodies care should be taken to avoid repeated freeze thaw cycles. Antibodies should not be exposed to prolonged high temperatures.
Note	For research use only
Application notes	For WB starting dilution is: 1:1000
Isotype	Rabbit Ig
Clonality	Polyclonal
MW	13 kDa
Uniprot ID	P49901
NCBI	P49901
Dilution Range	For WB starting dilution is: 1:1000
Expiration Date	12 months from date of receipt.



Western blot analysis in NCI-H460 cell l...