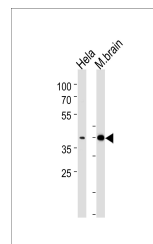


Product Datasheet

ATF2 Antibody (orb1267279)

Description	ATF2 Antibody
Species/Host	Rabbit
Reactivity	Human, Mouse
Conjugation	Unconjugated
Tested Applications	WB
Immunogen	This ATF2 antibody is generated from rabbits immunized with a KLH conjugated synthetic peptide between 318-347 amino acids from the Central region of human ATF2.
Target	ATF2
Preservatives	Supplied in PBS with 0.09% (W/V) sodium azide.
Form/Appearance	Liquid
Concentration	batch dependent
Storage	Store at 4°C for three months and -20°C, stable for up to one year. As with all antibodies care should be taken to avoid repeated freeze thaw cycles. Antibodies should not be exposed to prolonged high temperatures.
Note	For research use only
Application notes	For WB starting dilution is: 1:1000
Isotype	Rabbit Ig
Clonality	Polyclonal
MW	55 kDa
Uniprot ID	P15336
NCBI	P15336
Dilution Range	For WB starting dilution is: 1:1000
Expiration Date	12 months from date of receipt.



Western blot analysis in HeLa cell line ...