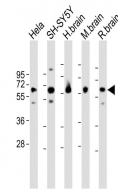


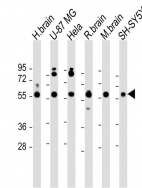
Product Datasheet

GDI1 Antibody (orb1265200)

Description	GDI1 Antibody
Species/Host	Rabbit
Reactivity	Human, Mouse, Rat
Conjugation	Unconjugated
Tested Applications	WB
Immunogen	This GDI1 antibody is generated from rabbits immunized with a KLH conjugated synthetic peptide between 415-443 amino acids from the C-terminal region of human GDI1.
Target	GDI1
Preservatives	Supplied in PBS with 0.09% (W/V) sodium azide.
Form/Appearance	Liquid
Concentration	batch dependent
Storage	Store at 4°C for three months and -20°C, stable for up to one year. As with all antibodies care should be taken to avoid repeated freeze thaw cycles. Antibodies should not be exposed to prolonged high temperatures.
Note	For research use only
Application notes	For WB starting dilution is: 1:1000-1:2000
Isotype	Rabbit Ig
Clonality	Polyclonal
MW	51 kDa
Uniprot ID	P31150
NCBI	P31150
Dilution Range	For WB starting dilution is: 1:1000-1:2000
Expiration Date	12 months from date of receipt.



Western Blot at 1:1000-1:2000 dilution L...



Western Blot at 1:2000 dilution Lane 1: ...