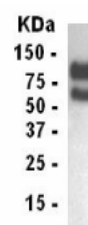


## Product Datasheet

### LDLR Antibody (orb1254126)

|                            |   |
|----------------------------|---|
| <b>Description</b>         | LDLR Antibody   |
| <b>Species/Host</b>        | Gallus  |
| <b>Reactivity</b>          | Human, Mouse, Rat   |
| <b>Conjugation</b>         | Unconjugated  |
| <b>Tested Applications</b> | WB  |
| <b>Immunogen</b>           | 29-205  |
| <b>Target</b>              | LDLR  |
| <b>Preservatives</b>       | Phosphate-Buffered Saline. No preservatives added.  |
| <b>Form/Appearance</b>     | Liquid  |
| <b>Concentration</b>       | 1 mg/mL   |
| <b>Storage</b>             | LDLR antibody can be stored at 4°C for short term (weeks). Long term storage should be at -20°C. As with all antibodies care should be taken to avoid repeated freeze thaw cycles. Antibodies should not be exposed to prolonged high temperatures. |
| <b>Note</b>                | For research use only   |
| <b>Application notes</b>   | LDL-R antibody can be used for the detection of LDL-R by Western blot, may also work for IHC and ICC.   |
| <b>Clonality</b>           | Polyclonal  |
| <b>MW</b>                  | 95.4 kDa (calculated)   |
| <b>Uniprot ID</b>          | <b>P01130</b>   |
| <b>NCBI</b>                | <b>NP_000518.1</b>  |
| <b>Dilution Range</b>      | LDL-R antibody can be used for the detection of LDL-R by Western blot, may also work for IHC and ICC.   |
| <b>Expiration Date</b>     | 12 months from date of receipt.   |



Western blot  
of LDLR  
antibody.  
Transient...